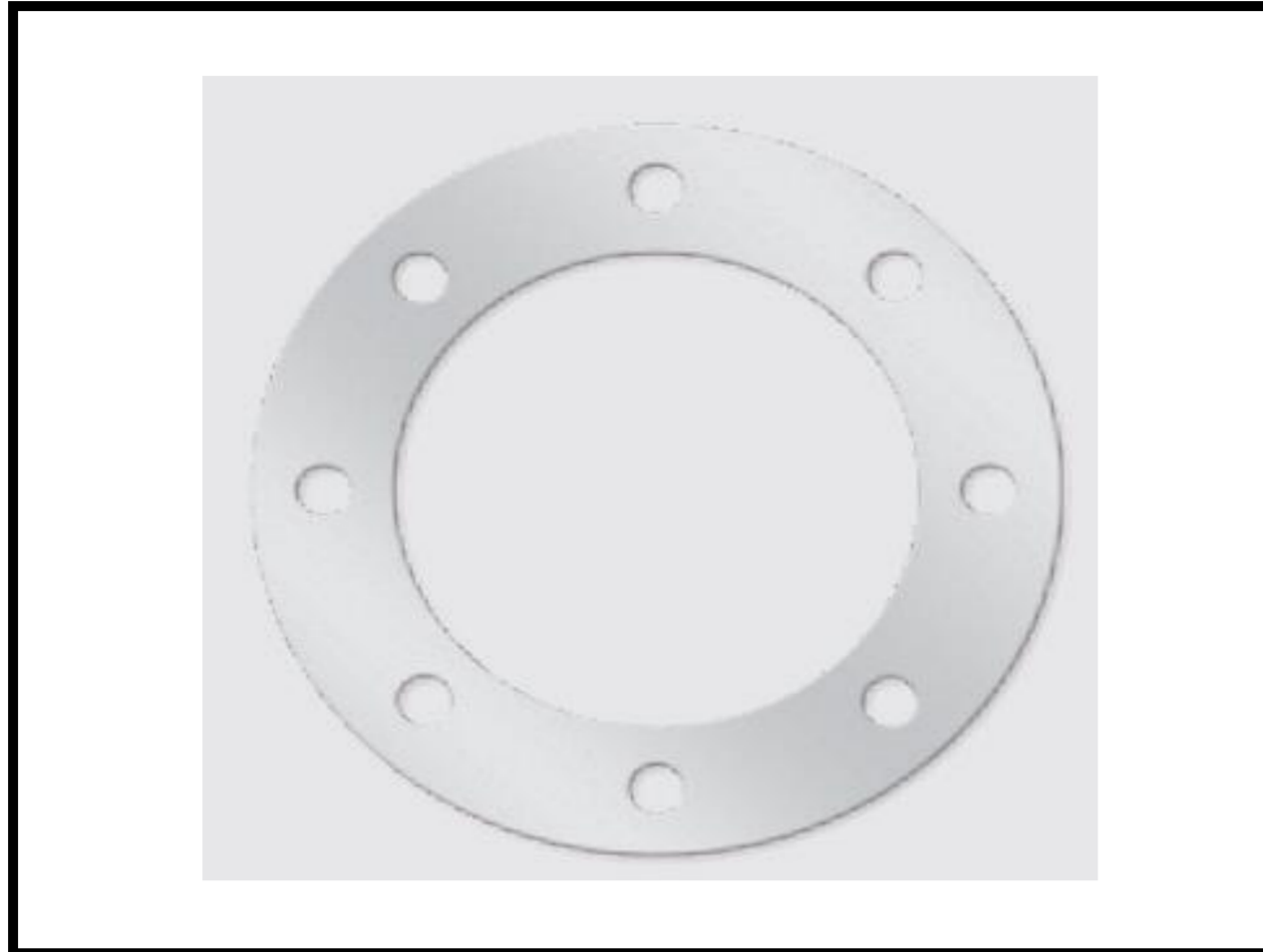


DATABLAD

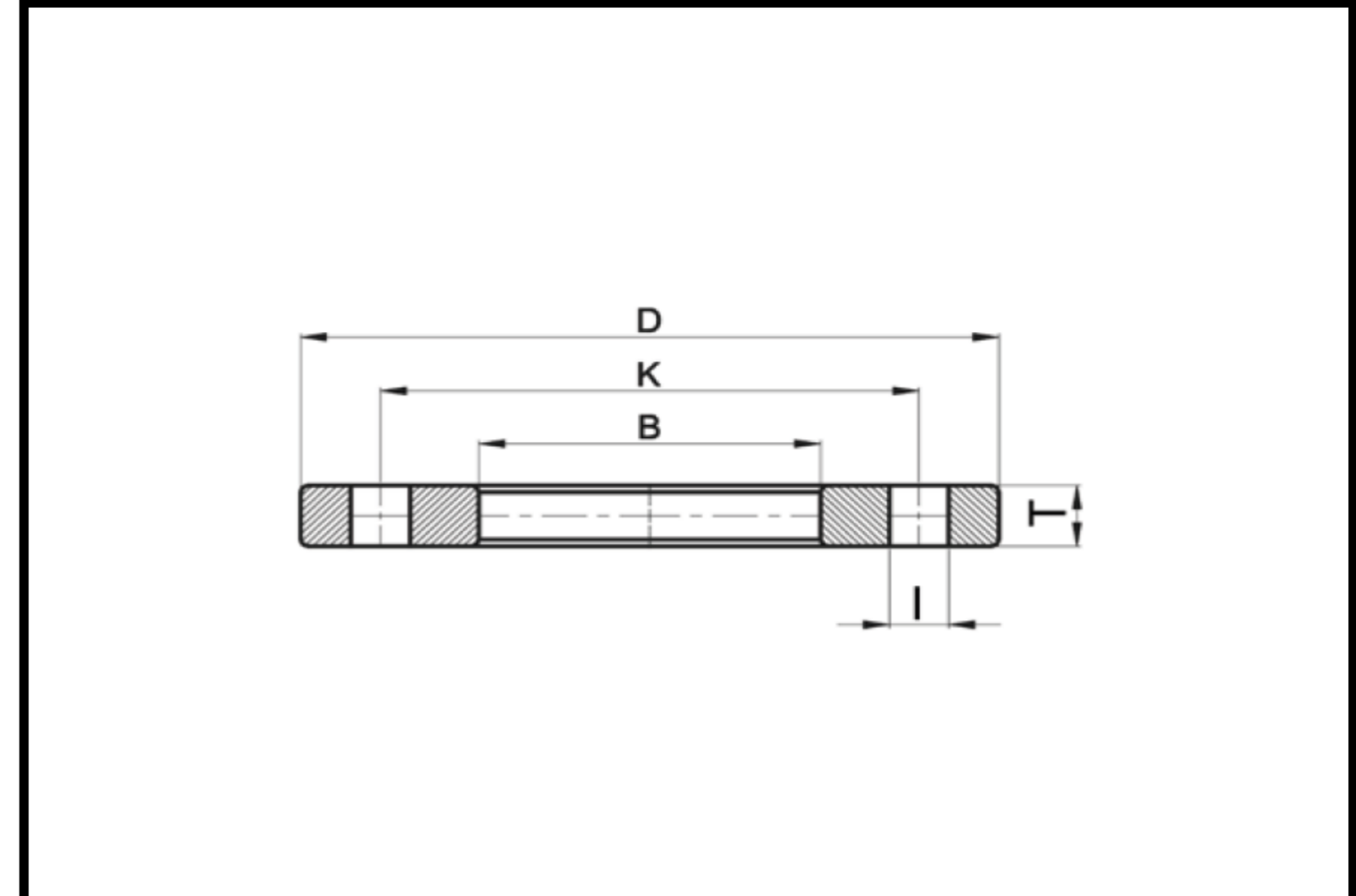
Løslens, syrefast stål - PN10 EN 1092-1



PRODUKT BILDE



TEGNING MED MÅL



Serie

1258/50

Fusion Code	NRF nr.	Rør diameter mm	DN mm	D mm	B mm	K mm	T mm	Antall boltehull	I mm	Bolt Diameter
SBR200X200NP10	2260082	200	200	340	235	295	10	8	22	M20
SBR225X200NP10	2260083	225	200	340	238	295	10	8	22	M20
SBR250X250NP10	2260084	250	250	395	288	350	15	12	22	M20
SBR280X250NP10	2260085	280	250	395	294	350	15	12	22	M20
SBR315X300NP10	2260086	315	300	445	338	400	20	12	22	M20
SBR355X350NP10	2260087	355	350	505	376	460	20	16	22	M20
SBR400X400NP10	2260088	400	400	565	430	515	25	16	26	M24
SBR450X450NP10	2260089	450	450	615	465	565	25	20	26	M24
SBR450X500NP10	2260091	450	500	670	517	620	25	20	26	M24
SBR500X500NP10	2260092	500	500	670	533	620	25	20	26	M24
SBR560X600NP10	2260093	560	600	780	618	725	25	20	30	M27
SBR630X600NP10	2260094	630	600	780	645	725	25	20	30	M27

Materiale:

316 Syrefast stål

Type:

N/A

Varemerke:

N/A

Prosess:

Stansing

Applikasjon:

Vann og Gass

Standard:

Produsert iht. to EN1092-1

FUSION PLASTICS LTD reserve the right to revise this product specification document, while maintaining compliance with the requirements of the product without prior notice. Tolerance on diameters and thickness according to the relevant standards unless otherwise specified. Tolerance: ±5%